



# Grose View Public School Newsletter

3 November 2021

Term 4 Week 5

Volume 12

## *From the Desk of the Principal*

Welcome back Grose View Public School! It has been pleasing to have students return to GVPs and engage socially with their peers and with their learning in all classrooms across the school. Thank you to all families for your patience and support with new routines in the mornings and afternoons. Our changed procedures are now working efficiently and most families are aware of the changes to routines. Thanks for your patience and flexibility. As restriction levels change, so too may school organisation. We will keep you updated if there are any changes to drop-off and pick-up procedures well in advance of any changes being made.

We have returned to school under Level 3 Plus restrictions, as outlined by the NSW Department of Education. This level will continue until the end of this week (Friday 5 November). We will move to Level 3 restrictions on **Monday 8 November**. Please see below for changes to updated level settings.

As announced by the Minister, from Monday 8 November all NSW schools will move to updated Level 3 settings that bring school operations more in line with what is allowed in the community. I would like to update you on the key changes that will be in place at our school from Monday 8 November and for the rest of Term 4.

### **KEEPING US ALL SAFE ON SCHOOL GROUNDS**

A combination of layered COVID-safe plans and measures will allow us to prioritise student and staff safety and keep our school open. To do this, the following guidelines will be in place:

- Students, staff and visitors must not attend school if unwell, even with mild symptoms.
- All staff and adult visitors on the school site must be fully vaccinated and provide proof of vaccination.

- Masks are required indoors for all staff, adult visitors and strongly recommended indoors for primary students. Masks can be removed when eating or exercising.
- All staff and visitors must check in when attending a school site or gathering.
- Adults should maintain 1.5 metres physical distancing wherever practicable.
- Activities and events should be held outdoors where practical.
- Indoor spaces will be well ventilated and as large as possible for the number of attendees - following square metre guidelines.
- Students should avoid mingling with other class and year groups when moving around the school.
- Students and staff will maintain good hand hygiene and schools will continue with enhanced cleaning, including high touch points.

### **FROM 8 NOVEMBER**

Our school will operate on updated Level 3 settings for **the rest of Term 4 2021**, with the following activities allowed in a COVID-safe manner:

- Assemblies and presentations are allowed outdoors, with cohorts separated and physical distancing in place. Fully vaccinated visitors (including parents and carers) are only allowed to attend if completing a specific role (such as presenting) and at the invitation of the school.
- Community use is allowed outside of school hours (including P&C meetings) with COVID-safe plans in place – in line with public health requirements.
- Dancing, bands, ensembles and music classes will be allowed within cohorts. However, everyone must wear masks while playing instruments indoors. Other instruments that rely on breath or require a mask to be removed to be played, as well as singing and chanting, are not permitted in Term 4.
- Excursions are allowed outdoors (and indoors where sole use of the premises is available).
- Incursions are allowed indoors and outdoors where cohorts are kept separate.

- Graduations and formals are allowed within cohorts, either on school sites or at external venues – with COVID-safe plans in place and physical distancing adhered to.
- School sports are allowed, including inter-school sports and access to indoor and outdoor pools (from 1 November).
- Transitions and orientations are allowed in a COVID-safe way that minimises mingling between students. More information to come.

## **PARENTS AND CARERS ON SITE TO SUPPORT SCHOOL OPERATIONS**

Fully vaccinated parents and carers will be allowed on-site to support curriculum delivery, student wellbeing activities and school operations (for example reading support, canteens and uniform shops). Parents and carers must check in using the school check-in and show proof of vaccination on entry to the school site.

## **ATTENDANCE**

We have had most students return to school under the staggered return to school plan. We know that school is the best place for students to learn and engage socially and academically with their peers. Attendance remains a key area for improvement for the school and we aim to have every student attending school every day.

While we encourage all students to attend school every day, we realise that there are circumstances where students are not able to attend school due to sickness. Students are not to attend school if they show any signs of illness and we ask that you keep students home in this instance.

We are currently updating the school's Student Attendance Policy and Procedures. This includes strategies to encourage students to attend school on time, every single day. We will inform the community of any changes as soon as this process has been finalised.

## **PROFESSIONAL LEARNING**

Teachers spent much of Term 3 learning about the most effective methods of teaching reading for students in the younger years. Next year we will form a collective of schools from across the Hawkesbury, Windsor, Blue Mountains and the Ponds, to participate in shared professional learning, lesson observations and program design. We are very excited about this project which has been inspired by Grose View Public School staff.

Alongside our research around the teaching of reading, teaching staff are learning about Rosenshine's Principles of Instruction. This research paper cross-references the research on what supports student learning with observations of what expert teachers do. Developing deep pedagogical understanding of the process of student learning ensures that all teachers are implementing research proven methods to improve student learning.

We are planning information sessions in 2022 to inform the community about reading, mathematics and the science of learning for interested parents/carers. We look forward to sharing our progress with the community at this time.

## **REPORTING**

Student reports will look considerably different to what you received in Semester 1. Obviously, there has been significant disruption to teaching and learning due to home learning. This will mean that Semester 2 Student reports will include a Mathematics, English and general comment only. Comments will focus on what students can do, as indicated by Term 4 assessment, and the next steps in learning. Hopefully, this will support families to identify where students are at with their learning and the next steps required in the key learning areas of Mathematics and English, as we move into 2022.

More information will be provided before reports are sent home. If you have any questions before this time, please contact your child's teacher.

## **OPPORTUNITY CLASS PLACEMENT TEST UPDATE**

To comply with the latest advice from NSW Health to minimise the risk of COVID-19 transmissions, the annual Opportunity Class Placement Test will now take place at a student's own school rather than in examination centres which bring students from across settings and sectors together.

To allow this change to be made, the test date is now 17 November 2021.

The department acknowledges the challenges faced by students during the pandemic response.

The safety of our students and staff is of paramount importance.

Marking of tests and student placements will continue to be managed by the High Performing Students Team.

Only students whose parents/carers have received a confirmation email from the High Performing Students Team are eligible to sit the test on the new date of 17 November. The application portal will not be re-opened for new applications.

Placement in an opportunity class will be based solely on the results of the test to ensure the fair and consistent assessment of students across all schools and regions of NSW. Principals will not be required to provide school assessment scores, but are requested to verify the information entered by parents/carers.

Please continue to monitor the department's website for the latest information relating to high potential students. <https://education.nsw.gov.au/public-schools/selective-high-schools-and-opportunity-classes/year-5>

### TELL THEM FROM ME ANNUAL SURVEY

Each year many public schools across NSW take part in the Tell Them From Me Survey. The Tell Them From Me student, parent and teacher surveys have been used in NSW public schools since 2013. They provide data on a range of aspects of school life, practices and procedures from the perspectives of students, parents/carers and teachers. Our school uses this information to improve our process to ensure that student success and wellbeing are maximised in all areas of school operation.

The Parent Survey link is included for your convenience. <http://nsw.tellthemfromme.com/gvpsparentsurvey>

Your participation in this survey is appreciated.

Thank you again for your continued support.

Until next time, be positive, persistent and be kind.

*Matt Carter*



### Absences from School

If your child is absent from school, you need to contact the school with an explanation of the absence. This can be done by phoning the office or by sending a note to the class teacher.

If the absence is more than **3 school days**, call the school to inform the teacher or provide a note to the class teacher. Include any additional information the school may need to know, eg cannot play sport.

As part of the implementation of the National Standards, holidays of **more than 5 school days** taken outside of school vacation periods will now be included as absences. **Please obtain a application for extended leave from the office prior to the absence.**



### Enrolments 2022

Planning is underway for the new school year. In order for us to plan effectively we need to know anticipated new enrolments and leavers.

If you, or a family you know, are planning to enrol children at Grose View PS next year please make contact with the office as quickly as possible.

If you are planning to enrol children elsewhere next year please advise the office as quickly as possible.

# ASSEMBLY AWARDS

Congratulations to the following students.

## TERM 2 WEEK 10

### CLASS WORK AWARDS

KE	Jackson C, Grace Q
KP	Joshua E, Indianna G
1/2A	Nash G, Joshua C
1/2C	Angelica P, Kai S
1/2S	Celina E, Meika B
3/4B	Max T, Nash M
3/4H	Thomas O, Alexandra J
4/5S	Riley L, Byron P
5/6D	Terence C, Sophie L
5/6L	Cooper H, Campbell C

### PRINCIPAL AWARDS


KE	Ryan L
KP	Audrey S
1/2A	Lydia H
1/2C	Lilly F
1/2S	William F
3/4B	Declan M
3/4H	Sofia E
4/5S	Charlotte W
5/6D	Jacob R
5/6L	Sunnie H

### PBL AWARDS

KE	Jett P
KP	John O
1/2A	Lillie L
1/2C	Aiden D
1/2S	Scarlett J
3/4B	Jaxon T
3/4H	Ayla H
4/5S	Zander W
5/6D	Olivia P
5/6L	Violet W



### POSITIVE BEHAVIOUR

<b>WEEK 10</b> Learn		<ul style="list-style-type: none"> <li>• Be a problem solver</li> <li>• Follow game rules</li> <li>• Try new skills</li> </ul>
-------------------------	--	--

# ASSEMBLY AWARDS

Congratulations to the following students.

## REWARD CARDS—TERM 2 WEEK 10

Bronze Card 1	Silver Card 4	Gold Card 7	Platinum Card 10
	Harrison M Hayden P		
Bronze Card 2	Silver Card 5	Gold Card 8	Platinum Card 11
Meika B Jasmine H Jeremy G Parks E Hunter S		Flynn B Allyrah S	



When we get 3 Reward Cards we receive an Award Badge



Parents and/or Guardians will be officially invited to attend a High Tea before the award badge ceremony at a Whole School Assembly

Award Badge Assemblies are usually held mid-term and at the end of term



# Snapshot of 3/4H



## What We're Learning

It may seem like an age since we were last together in the classroom but 3/4H have not skipped a beat and have been eager little learners. They have been busy building schema (the process of storing and interpreting information) in a range of key learning areas. 3/5H have been:

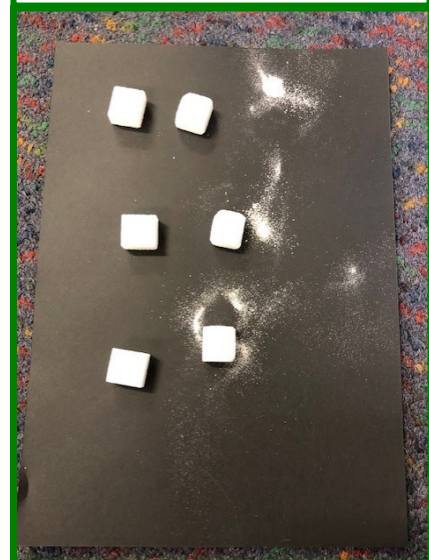
- honing their writing skills to construct persuasive texts using devices such as rhetorical questions and emotive language;
- examining how natural processes and human actions have changed Earth's surface over time in science, including erosion and weathering; and
- using their knowledge of multiplication facts to find the multiples and factors of whole numbers.

## Class Photos



Mini scientists at work!

3/4H exploring how abrasion (physical weathering) occurs



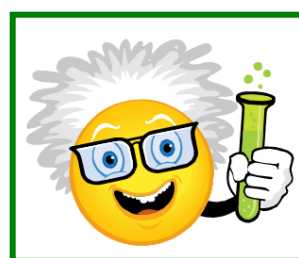
## Fun Facts

- A prime number only has two factors—1 and itself
- A prefix can modify or change the meaning of a root word.



## Teacher Contact Information

Ms Julia Hutchins  
[julia.hine1@det.nsw.edu.au](mailto:julia.hine1@det.nsw.edu.au)



# CALENDAR

Friday 5 November	4.00 pm	Year 6 Farewell committee meeting (via Zoom)
Monday 8 November	6.30 pm	P&C AGM and meeting (via Zoom)
Wednesday 17 November		Opportunity Class Placement Test (online) Selective High Schools in 2023 applications close
Friday 19 November	4.00 pm	Year 6 Farewell committee meeting (via Zoom)
Tuesday 23 November		Year 6 high school orientation day
Thursday 25 November	9.30 am 2.00 pm	Student Executive speeches Sport Executive speeches
Friday 3 December	4.00 pm	Year 6 Farewell committee meeting (via Zoom)
Monday 6 December		Year 6 Farewell fundraising raffle closed
Wednesday 8 December		Presentation Day (to be confirmed)
Thursday 9 December	2.00 pm	Year 6 Farewell fundraising raffle drawn
Friday 10 December		Year 6 Farewell
Monday 13 December	6.30 pm	P&C Meeting (via Zoom)
Thursday 16 December		Last day of Term 4 for students
Friday 17 December		School Development Day

## 2022

Friday 28 January	School Development Day
Monday 31 January	School Development Day
Tuesday 1 February	Years 1-6 students return for Term 1 Best Start Assessments—Kindergarten
Wednesday 2 February	Best Start Assessments—Kindergarten

# P&C NEWS

The canteen currently serves recess and lunch on Wednesday and Fridays via Flexischools. No cash orders or counter service is available.

**If you are able to volunteer in the Canteen, even if only for an hour or two, please leave your contact details with the office.**

For more updates and announcements regarding the canteen please follow our Facebook page *Grose View Public School Canteen*.

Thank you for your continued support of our canteen.

*Rebecca Camilleri*





# NOTICES

## Run, Jump, Throw, Walk or Roll TO BE YOUR BEST



Nicola McDermott  
Former Little Athlete  
2021 Olympian

Sign up for your  
local Little Athletics Centre  
this Summer

**Kurrajong Bilpin**  
**Little Athletic Centre**  
**Friday nights**  
**McMahons Park, Kurrajong**  
**[www.kblac.org.au](http://www.kblac.org.au)**

**Visit [lansw.com.au](http://lansw.com.au) to join today**

*Active Kids vouchers accepted*

Little Athletics is a Foundation sport  
that focuses on learning  
and developing fundamental skills  
with a focus on Family, Fun and Fitness!



Scan to register at your  
Little Athletics Centre



## TEE BALL – 2021-22

Hawkesbury Baseball Club  
Bensons Lane, Richmond

Summer Season starts 27th November 2021 & runs until mid-March 2022  
(excluding school holidays)

Registration is now open for players with dob 2015, 2016 & 2017

Games played on Saturday mornings  
Registration cost – direct to Baseball Australia \$50  
Club fee covered by Active Kids Vouchers

For further information please contact Rod on 0414 733 859  
or email [rod.tuckwell@hotmail.com](mailto:rod.tuckwell@hotmail.com)

# NOTICES



## HAVE A BLAST!

OUTDOORS  
NON-CONTACT



**ACTIVE KIDS**  
LIFE AND MOVEMENT MATTERS

**YOU COULD PLAY WOOLWORTHS CRICKET BLAST FOR FREE!**

Claim your voucher today

**BE PART OF THE CREW!**

Get into Woolworths Cricket Blast. It's a fun and active program for kids of all abilities - whether it's your first time with a bat or you're a backyard cricket star!

- ✓ It's easy to join a crew and make awesome new friends.
- ✓ Wear the colours of your Big Bash heroes.
- ✓ Parents warm up, you can join in too!



### JUNIOR BLASTERS

AGES 5-7 | 60 MINS | 6+ WEEKS

Learn new skills, including catching, throwing and teamwork, through fun game based activities.

Sign up now for your Starter Pack. Returning Junior Blasters score a Returner Pack with a Backpack, Ball and choice of bonus item!



**STARTER KIT**

**+ FREE ADD ON**



**RETURNER KIT**

**JUNIOR CRICKET 1**

**AGES UNDER 10-11**  
2 HOURS

- Short, action-packed games played in under two hours.
- Smaller team sizes offer everyone more opportunities to bat, bowl and field.
- Play on a shorter pitch for more consistent ball delivery and skill development.
- A fun, welcoming and inclusive environment.

7 PLAYERS

20 OVERS

16M PITCH

**JUNIOR CRICKET 2**

**AGES UNDER 12-13**  
2-3 HOURS

- Short, action-packed games played in under three hours.
- Improve your technical cricket skills with a longer pitch & wider boundaries.
- Develop your teamwork in a friendly competition.
- Smaller team sizes offer everyone more opportunities to bat, bowl, field.
- A fun, welcoming and inclusive environment.

9 PLAYERS

20/30 OVERS

18M PITCH

**JUNIOR CRICKET 3**

**AGES UNDER 14-18**  
2.5-4 HOURS

- Short, action-packed games played in under four hours.
- Refine your technical cricket skills with a full length pitch and wider boundaries.
- Develop your teamwork in a friendly competition.
- A fun, welcoming and inclusive environment.

11 PLAYERS

20/40 OVERS

20.1M PITCH

**JOIN YOUR NEAREST CLUB**

- Bligh Park Cricket Club
- Freemans Reach Cricket Club
- Glossodia Cricket Club
- North Richmond Cricket Club
- Pitt Town Sports Cricket Club
- Richmond Cricket Club
- Wilberforce Cricket Club

Programs for all ages & skills

Blasters, Junior & Senior Teams

**REGISTER NOW!**



**Play Cricket**



**PROUDLY  
PRESENTED BY**



**HOW TO PLAY FOR FREE!**

Every NSW school student (K-12) is entitled to 2x \$100 Active Kids vouchers each year. Learn more at [service.nsw.gov.au/campaign/active-kids](http://service.nsw.gov.au/campaign/active-kids)



# NOTICES



## ILLUM<sup>N</sup>ATE

Year 6! You are invited to join Illuminate, the KNAC youth group, on a journey of...

FAITH ♦ FUN ♦ FOOD ♦ FRIENDS

...6.30 pm – 8.30 pm every Friday night from 5 November until the end of term in the KNAC Hall

At Illuminate you will join with others just like you who are wanting to learn about **faith** in Jesus, in a place where we have **fun** and where we eat yummy **food** whilst spending time with **friends**!



Registration forms are available from the Illuminate Coordinator, Courtney Woods 0424 654 550

# NOTICES

## School Travel for 2022



### 2022 school travel applications are now open

Students who need a School Opal card or travel pass for 2022 can [apply](#) now. A new application will need to be submitted if they are applying for a school travel pass for the first time, or if they are requesting an additional travel entitlement as a result of a new shared parental responsibility situation (e.g. joint custody).

Students who change address, school, campus location, or who have repeated a year or received an expiry notification from Transport for NSW for their school travel entitlement should [renew or update](#) their details before **the end of term 4**. This will ensure that schools can endorse applications and current entitlements are updated and remain valid. School Opal card holders will have the changes applied to their existing card.

If a student's distance eligibility has changed based on their grade the system will automatically update their entitlement if they meet the new criteria. If they do not meet the new [eligibility criteria](#), they will receive an expiry notification via email.

Students who have an entitlement approved under a medical condition that is due to expire will receive a notification advising them to re-apply.

[Term Bus Pass](#) holders will receive a notification to re-apply.

Students in the Opal network applying for an Opal card (including a Term Bus Pass) for the first time will receive their Student Opal card at their nominated postal address. Cards will be mailed out from January 2022.

Students living in rural and regional (R&R) areas should receive their travel pass at the start of the new school year from their nominated transport operator. It may come via the school or be sent directly to them at home. **Note:** some R&R operators do not issue travel passes. Students/parents should confirm with their nominated operator if they do not receive a pass.

# NOTICES

## School Student Transport Scheme site change

On 1 October 2021 the School Student Transport Scheme (SSTS) information and application portal was moved to **[transportnsw.info](https://transportnsw.info)**. This will assist families to find all their travel information in the one place.

## Travel from Term 1 2022

We ask that parents plan ahead and make sure their child knows which service/s to use and has a valid ticket to travel; either a School Opal card or Child/Youth Opal card (within Greater Sydney) or a School Travel Pass (outside Greater Sydney), from the start of the school year.

Applications for the School Student Transport Scheme (SSTS) open at the start of Term 4 2021 for travel in 2022, so parents/students can [apply](#) or [update](#) details early and be ready for the start of the new school year.

Most students using the Opal network will not need a new Opal card and can continue travelling on their existing card each year.

The start of the year is a difficult period for local bus operators, and students travelling without a valid ticket make service planning and operations increasingly difficult.

We recognise that for some families last minute changes to school enrolments mean they may not have a School Opal card or Travel Pass for the start of term. In the Opal network, we strongly encourage these families to have their children travel on a Child/Youth Opal card until they receive their valid School Opal card. If outside Greater Sydney, parents should contact their [local bus operator](#) to discuss their travel needs.

Bus operators are flexible and understanding, particularly at the start of the school year, and will ensure students can travel safely to and from school. But to best support our operators we encourage all students to have a valid ticket, as early as possible, from the start of the school year.

Please also remember that students using Opal cards must tap on and tap off in line with the [Student code of conduct](#) and [Opal terms of use](#).



Transport  
for NSW

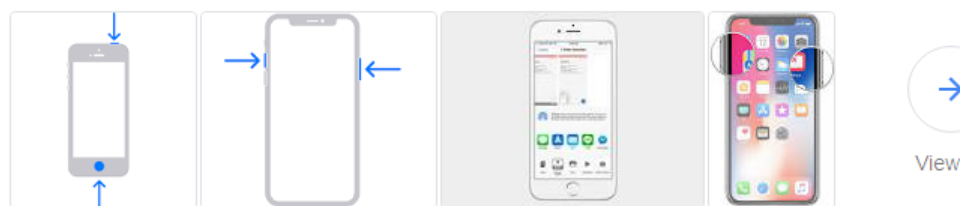
Further information can be found at [transportnsw.info/travel-info/using-public-transport/school-travel](https://transportnsw.info/travel-info/using-public-transport/school-travel)

Enquiries can be submitted at [transportnsw.info/contact-us/feedback/passes-concessions-feedback](https://transportnsw.info/contact-us/feedback/passes-concessions-feedback)



Please take a screenshot of your SMS notification and email it to:  
groseview-p.school@det.nsw.edu.au

## NOTICES



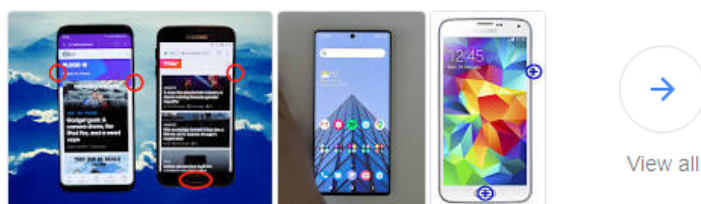
### Take a screenshot on your iPhone

1. Press the Side Button and the Volume Up button at the same time.
2. Quickly release both buttons.
3. After you take a **screenshot**, a thumbnail temporarily appears in the lower-left corner of your screen. Tap the thumbnail to open it or swipe left to dismiss it.

Apr 29, 2020

[support.apple.com > en-au](https://support.apple.com/en-au) ▼

[Take a screenshot on your iPhone – Apple Support](https://support.apple.com/en-au)



If you have a newer **phone** or tablet with a home button that sits underneath the LCD display, you'll need to use the Volume Down button and the Power button to take a **screenshot**. Hold both buttons at the same time and you should hear a click to indicate the **screen capture**. Apr 7, 2020

[www.samsung.com > support > mobile-devices > how-to-take-a-screenshot-on-a-samsung-phone](https://www.samsung.com/support/mobile-devices/how-to-take-a-screenshot-on-a-samsung-phone) ▼

[Screenshot on a Samsung Phone | Samsung Support Australia](https://www.samsung.com/support/mobile-devices/how-to-take-a-screenshot-on-a-samsung-phone)

### How to screenshot on Android phone?

#### Take a screenshot

1. Open the screen that you want to capture.
2. Depending on your **phone**: Press and hold the Power + Volume down buttons at the same time for a few seconds. If that doesn't work, press and hold the Power button for a few seconds. Then tap **Screenshot**. ...
3. At the top of the screen, you'll find **Screenshot** capture .

[support.google.com > android > answer](https://support.google.com/android/answer/9359596) ▼

[Take a screenshot on your Android device - Android Help](https://support.google.com/android/answer/9359596)

Search for: [How to screenshot on Android phone?](https://support.google.com/android/answer/9359596)

# NOTICES

## How to Handrub?

**RUB HANDS FOR HAND HYGIENE! WASH HANDS WHEN VISIBLY SOILED**



**Duration of the entire procedure: 20-30 seconds**

**1a**

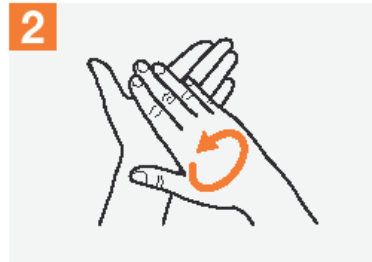


Apply a palmful of the product in a cupped hand, covering all surfaces;

**1b**

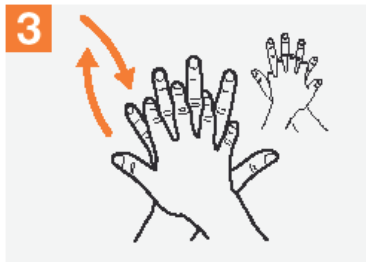


**2**



Rub hands palm to palm;

**3**



Right palm over left dorsum with interlaced fingers and vice versa;

**4**



Palm to palm with fingers interlaced;

**5**



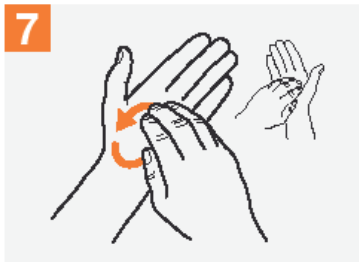
Backs of fingers to opposing palms with fingers interlocked;

**6**



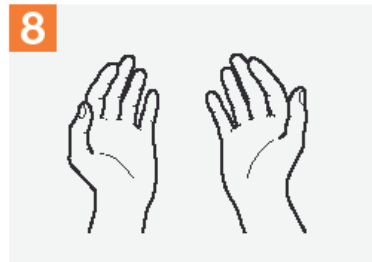
Rotational rubbing of left thumb clasped in right palm and vice versa;

**7**



Rotational rubbing, backwards and forwards with clasped fingers of right hand in left palm and vice versa;

**8**



Once dry, your hands are safe.



**Patient Safety**

*A World Alliance for Better Health Care*

**SAVE LIVES**  
**Clean Your Hands**

All reasonable precautions have been taken by the World Health Organization to verify the information contained in this document. However, the published material is being distributed without warranty of any kind, either expressed or implied. The responsibility for the interpretation and use of the material lies with the reader. In no event shall the World Health Organization be liable for damages arising from its use. WHO acknowledges the Hôpitaux Universitaires de Genève (HUG), in particular the members of the Infection Control Programme, for their active participation in developing this material.

May 2009

# NOTICES

## WE'RE HERE TO HELP!

THE SCHOOL COUNSELLING SERVICE IS HERE TO HELP SUPPORT YOU AND YOUR FAMILY.

CHILDREN'S REACTIONS TO TRAUMATIC EVENTS MAY RESULT IN CHANGES TO THEIR BEHAVIOUR. IF YOU HAVE ANY CONCERNS ABOUT YOUR CHILD'S REACTIONS OR BEHAVIOUR, PLEASE CONTACT THE SCHOOL.



**SOME THINGS  
YOU MAY  
NOTICE IN  
YOUNGER  
CHILDREN...**

**Difficulty  
sleeping**

**More  
clingy**

**School  
avoidance**

**Tantrums**

**Irritability**

**Physical  
problems e.g.  
headaches,  
stomach  
aches**

**Difficulty  
concentrating**

**Anger**