



Grose View Public School Newsletter

15 October 2020

Term 4 Week 1

Volume 16

From the Desk of the Principal

COVID Update

The NSW Department of Education has updated its Term 4 guidelines for schools. Please note the following summary.

Parents/carers are still only permitted to visit the school for the following reasons:

- to attend essential parent/carer meetings with teachers and/or school executives to discuss disciplinary or welfare matters where a virtual meeting solution is not available;
- to attend to essential business at the front office or for the purpose of picking up their child if they are unwell or where they have been asked to arrange for a COVID-19 test after their child has displayed flu like symptoms while at school;
- to perform canteen duties; and/or
- to provide educational support for activities that are essential to the delivery of curriculum.

Schools are still required to sight negative COVID test results before allowing staff and students to return to school if they have been unwell with flu like symptoms.

Schools can now plan for kindergarten orientation programs to be held after 1 November, following strict COVID safe guidelines. Parents/carers should not remain on the school site during kindergarten orientation. Year 6 graduations may occur but are also subject to strict COVID guidelines, in accordance with Year 12 formal graduations.

Some camps and excursions are permitted if they can meet all of the requirements and it is deemed safe, appropriate and achievable for all participants to attend. Please note that for a camp or excursion to take place we must be able to ensure that the region being visited is COVID safe; all venues and accommodation have COVID safe plans; financial requirements on families are reasonable within the short timeframe; and that all staff are able and willing to attend given the risk it may pose to themselves or their families.

Busways Meeting

This week I met with the Busways School Liaison Officer to discuss a range of issues impacting on the school. The following issues were raised:

- It is essential that all students tap on/off with their OPAL card every trip as this data is used to determine the demand and requirement for bus services in an area. Currently a significant number of students do not tap on/off and this may impact our entitlement to a service.
- If you live within 2.3 km of the school you are not entitled to a free OPAL card service unless you can demonstrate that there are insufficient footpaths for your child to safely walk to school. To apply for a free card contact Transport NSW.
- An adjustment to the bus timetables is occurring that will hopefully see the morning buses arrive before 9.03 am in order for students to be in class on time everyday.
- Inappropriate student behaviour on buses can be recorded on CCTV and shown to the school and parents/carers if required. This may result in a minimum 4 week suspension of travel.

Moving on in 2021

As most of you will be already be aware, I will be relinquishing my role as Principal of Grose View PS at the conclusion of the 2020 school year to take up a new role as a *Principal School Leadership*, a position designed to support principals and school leadership teams to lead school improvement.

Over the coming weeks and months, I will be sure to savour each and every moment of my time here at GVPS. Grose View PS will always hold a special place in my heart. Since my appointment in 2014, it has been an absolute privilege to hold this position in a community such as this one. As I have often said, many schools strive to create a *sense* of community, but at Grose View, we have more than a *sense* of community, we have *actual* community. This is something that should always be treasured and protected, for it is becoming an increasingly rare phenomenon.

Damien Feneley

CONGRATULATIONS

Maisie M competed in the NSW Long Course Cross Country Championships in Dapto over the weekend. This is her second big event in as many months, and was an attempt to secure herself a spot at the National Championships. Maisie needed to finish in the top ten to qualify.

Maisie was well prepared for her race after training extremely hard all year. She ran a gutsy race against a huge and talented field and placed an excellent sixth overall in the U/12 3 km course with an outstanding time of 11 minutes and 39 seconds.

Maisie got off to an excellent start and ran with the top 10 runners in a very tight bunch for the first 2.5 km. The first six positions were only decided in the last few hundred metres. It was so exciting to see Maisie so close to the front, so close to the finish line, after such a long and tiring gallop.

This magnificent achievement would have seen Maisie competing in her first Nationals if not for the COVID-19 pandemic, which unfortunately brought about the cancellation of the event.

In lieu of this, Maisie has been named on the "Honorary Nationals Team" and will be awarded the full kit, uniform and honours as a result of her remarkable achievements this year.

Please join us in congratulating Maisie. She considers her achievement a shared honour for her family, her club, her community and her school.



JUST A LITTLE *Reminder*

TERM 4 SCHOOL CAMPS

We have three school camps scheduled for Term 4 including the Year 3 YMCA camp, the Year 4 Blue Mountains camp and the Year 5 2019 Blue Mountains camp.

Unfortunately, we have had to cancel these camps. Funds will be transferred to fees in advance.

KISS N DROP

We have now had several complaints about vehicles remaining in the Kiss n Drop zone for more than 2 minutes after dropping students at school in the morning.

Please remember there is a **maximum stopping time of 2 minutes**, and be courteous to your fellow parents/carers by following this and other rules set out on page 4 of this newsletter.

COVID-19 TEST RESULTS

If your child has been tested, please screenshot the SMS you receive with the results and email it to school for our records as per instructions on page 3 of this newsletter. Children must remain at home after testing (even with negative results) until they are symptom free.

DRINKING WATER AT SCHOOL

Due to COVID-19 restrictions, students are not permitted to drink from the bubblers.

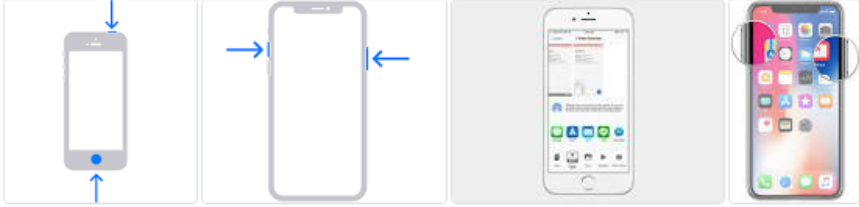
Children need to stay hydrated, even in cooler weather. **Please remember to ensure your child has a drink bottle** in their school bag each morning before sending them to school.

BIRTHDAY CAKES AT SCHOOL

A friendly reminder that if you are sending cakes to school for your child's birthday they **need to be purchased from a registered bakery, cake shop or supermarket**. Unfortunately, due to COVID-19 restrictions, we are unable to distribute home baked cakes at school.

PROVIDING THE SCHOOL WITH CONFIRMATION OF COVID-19 TEST RESULTS

Please take a screenshot of your SMS notification and email it to:
groseview-p.school@det.nsw.edu.au



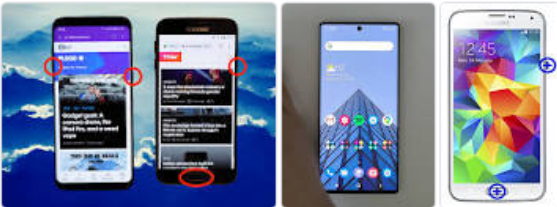
Take a screenshot on your iPhone

1. Press the Side Button and the Volume Up button at the same time.
2. Quickly release both buttons.
3. After you take a **screenshot**, a thumbnail temporarily appears in the lower-left corner of your screen. Tap the thumbnail to open it or swipe left to dismiss it.

Apr 29, 2020

[support.apple.com > en-au](https://support.apple.com/en-au)

[Take a screenshot on your iPhone – Apple Support](#)



If you have a newer **phone** or tablet with a home button that sits underneath the LCD display, you'll need to use the Volume Down button and the Power button to take a **screenshot**. Hold both buttons at the same time and you should hear a click to indicate the **screen capture**. Apr 7, 2020

[www.samsung.com > support > mobile-devices > how-to-take-a-screenshot-on-a-samsung-phone](https://www.samsung.com/support/mobile-devices/how-to-take-a-screenshot-on-a-samsung-phone)

[Screenshot on a Samsung Phone | Samsung Support Australia](#)

How to screenshot on Android phone?

Take a screenshot

1. Open the screen that you want to capture.
2. Depending on your **phone**: Press and hold the Power + Volume down buttons at the same time for a few seconds. If that doesn't work, press and hold the Power button for a few seconds. Then tap **Screenshot**. ...
3. At the top of the screen, you'll find **Screenshot** capture .

[support.google.com > android > answer](https://support.google.com/android/answer/9358263)

[Take a screenshot on your Android device - Android Help](#)

Search for: [How to screenshot on Android phone?](#)

'Drop-off and Pick-up' area safety tips



Safety tips for drivers using a 'Drop-off and Pick-up' area

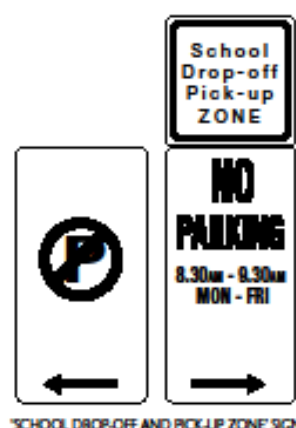
- Always drop-off or pick-up your child from the designated area, following the school's procedures.
- Drivers should remain in their vehicles at all times in the 'Drop-off and Pick-up' area.
- Make sure children use the footpath-side door when getting in and out of a car.
- Make sure the hand brake is applied when the vehicle is stationary.
- Never double park.
- Never park across a pedestrian crossing.
- Never undertake a U-turn in close proximity to the school.

Safety tips for students

- Stay buckled up until the vehicle has stopped in the 'Drop-off and Pick-up' area.
- Make sure your school bag and other items are in a safe position, eg on the floor.
- Be ready to get out of the car with your belongings when the car has stopped and you have unbuckled your seatbelt.
- Always get in and out of the backseat of the vehicle through the safety door – the rear footpath-side door.

Safety tips for volunteer supervisors

- Wear a conspicuous, identifying safety item such as a fluoro vest, sash and/or hat.
- Assist students to exit and enter each vehicle in turn in the 'Drop-off and Pick-up' area, while remaining on the footpath.
- Do not attempt to direct traffic and do not enter the road environment.



'SCHOOL DROP-OFF AND PICK-UP ZONE' SIGN



SAFETY DOOR STICKER
RTAPub 05.203 Stock No. 2290



For further information



www.rta.nsw.gov.au



9218 6084

RTAPub 07.014

CALENDAR

Friday 23 October		Book Fair—students browse
Monday 26 October		GVPS Book Week begins Book Fair
Tuesday 27 October		Book Fair
Wednesday 28 October		Book Fair
Friday 30 October		World Teachers' Day Year 6 Fundraiser—Fun-a-thon
Monday 2 November	6.00 pm	Kindergarten 2021 Parent Information Evening— to be confirmed
Thursday 5 November		Year 6 Longneck Lagoon EEC Leadership Day
Monday 9 November	6.30 pm	P&C Meeting— to be confirmed
Wednesday 11 November		Remembrance Day
Thursday 12 November		NAIDOC Incursion— to be confirmed
Friday 13 November		NAIDOC Incursion— to be confirmed
Monday 16 November	1.00 pm	Kindergarten Orientation 1— to be confirmed
Tuesday 17 November	9.30 am 2.00 pm	Student Executive 2021 speeches Sports Executive 2021 speeches
Wednesday 18 November	9.00 am	Opportunity Class Placement Test Kindergarten Orientation 2— to be confirmed
Friday 20 November	11.00 am	Kindergarten Orientation 3— to be confirmed
Friday 27 November	2.00 pm	Kindergarten Transition 1— to be confirmed
Tuesday 1 December		High School Orientation Day— to be confirmed
Wednesday 9 December		Presentation Day— to be confirmed
Friday 11 December	2.00 pm	Kindergarten Transition 2— to be confirmed Year 6 Farewell

P&C NEWS

SCHOOL BANKING

Unfortunately, we have not been able to find a volunteer to process student banking.

There will be no school banking available to our students this year. Please do not send deposit books and money to school with your child.

Parents may continue to make deposits either online or in branch.



CANTEEN

Our canteen will continue to open on Wednesday and Fridays this term for lunch orders only. **All orders will need to be placed online through Flexischools before the 9.30 am cut off.** Unfortunately, we are still unable to provide counter service or accept cash payments.

NOTICES



Grose View Public School

~ A future focused school ~



Education
Public Schools

19 March 2020

Dear Parents

EXPRESSION OF INTEREST - KINDERGARTEN ENROLMENTS 2021

We are presently in the process of organising our Kindergarten Orientation Program for 2021. The program during Term 4, will involve activities such as parent/teacher meetings, pre-school visits, preschoolers attending our school and information packages.

If you are considering enrolling your child, or you know of someone who is, it would be appreciated if you could complete and return the form below. A letter regarding orientation for Kindergarten will be sent home in Term 3. You are welcome to contact our school for further information.

Yours sincerely

Mr Damien Feneley
Principal

GROSE VIEW PUBLIC SCHOOL Kindergarten Enrolment 2021

Child's Name _____	Male / Female _____	Date of Birth ____/____/____
Mother's Name _____	Father's Name _____	
Mailing Title _____	Home Phone _____	
Home Address _____		
	In area Yes / No _____	
Mobile - Mum _____	Mobile - Dad _____	
Email - Mum _____	Email - Dad _____	
Is there any medical information or special needs your child may require at school? Yes / No _____		
If yes, please provide brief details: _____		
Does your child currently receive Early Intervention? Yes / No _____		
If yes, please provide brief details: _____		
Has your child had their hearing assessed? Yes / No _____		
If yes, please provide brief details: _____		
Has your child had their vision assessed? Yes / No _____		
If yes, please provide brief details: _____		
Does your child have any brothers or sisters enrolled at a NSW Government school? Yes / No _____		
If yes, please provide the details of the most recently enrolled brother or sister.		
Name _____	Male / Female _____	Date of Birth ____/____/____
School _____	Year _____	Class _____

NOTICES

School Travel for 2021



2021 school travel applications are now open

Applications for student travel in 2021 opened from Monday 12 October 2020.

Students who require a School Opal card or travel pass for 2021 can now [apply](#) online. A new application should be submitted if a student is applying for a school travel pass for the first time or requesting an additional pass as a result of a new shared parental responsibility situation (e.g. joint custody).

Students who have changed school/campus, changed address, repeated a year or received an expiry notification from Transport for NSW for their school travel entitlement should [re-apply or update their details](#).

*Applications must be completed by the student's parent or legal guardian if the student is aged under 16 years. Students 16 years and over must complete the application form themselves.

Where there is a change of distance eligibility based on a student's grade, the system will automatically update a student's entitlement if they meet the new criteria. If they do not meet the new [eligibility criteria](#), they will receive an expiry notification via email.

Students who have an entitlement approved under a medical condition which is due to expire will receive a notification advising them to re-apply.

[Term Bus Pass](#) holders will receive a notification to re-apply.

If a student needs to update their information or re-apply, they should go online to <https://apps.transport.nsw.gov.au/ssts/updateDetails>

Applications need to be submitted before 31 December 2020 to ensure that current student entitlements are updated and their current entitlement/card remains valid. If their application is submitted after 31 December 2020, the system will automatically cancel an entitlement/card and a new one will need to be issued.

Students in the Opal network applying for a SSTS or Term Bus Pass entitlement for the first time will receive their card at their nominated postal address. Cards will be mailed out from January 2021.

NOTICES



Prospective Year 7 Students 2022 at Sydney Technical High School

Sydney Technical High School, established in 1911, has a proud tradition of student academic achievement. The school prepares young men who are scholarly and socially responsible. Teaching and learning programs feature extension and higher order thinking and are recognised as best practice for High Potential and Gifted Learners.

Other features of the school include robotics, debating, public speaking, digital media, music ensembles and sport. The school actively promotes an environment in which student wellbeing, tolerance of others and strong community values support each student reaching his potential.

Enrolments: Students seeking entrance into Year 7 must participate in selection procedures organised by the Department of Education. For further information contact the High Performing Students Team on 1300 880 367 or email: ssu@det.nsw.edu.au

Due to COVID-19 restrictions, we are unable to hold our regular annual Open Day. To ensure that you are able to hear a little more about how wonderful our school is, we have prepared a Google Drive for you to access. The drive contains a video presentation from staff and students, a film entitled "A Day in the Life of a Techie" and some flyers about some of our many extra-curricular activities.

To access the Google Drive:
<https://tinyurl.com/y3a5mfqn>

SYDNEY TECHNICAL HIGH SCHOOL

686 Forest Road Bexley 2207
www.sths.nsw.edu.au

Enquiries to the School: 9587 5899

NOTICES

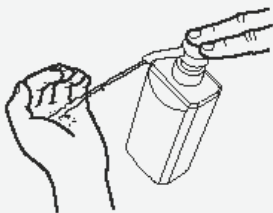
How to Handrub?

RUB HANDS FOR HAND HYGIENE! WASH HANDS WHEN VISIBLY SOILED



Duration of the entire procedure: 20-30 seconds

1a



Apply a palmful of the product in a cupped hand, covering all surfaces;

1b

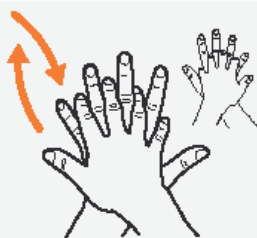


2



Rub hands palm to palm;

3



Right palm over left dorsum with interlaced fingers and vice versa;

4



Palm to palm with fingers interlaced;

5



Backs of fingers to opposing palms with fingers interlocked;

6



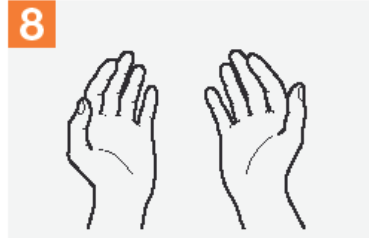
Rotational rubbing of left thumb clasped in right palm and vice versa;

7



Rotational rubbing, backwards and forwards with clasped fingers of right hand in left palm and vice versa;

8



Once dry, your hands are safe.



Patient Safety

A World Alliance for Better Health Care

SAVE LIVES
Clean Your Hands

All reasonable precautions have been taken by the World Health Organization to verify the information contained in this document. However, the published material is being distributed without warranty of any kind, either expressed or implied. The responsibility for the interpretation and use of the material lies with the reader. In no event shall the World Health Organization be liable for damages arising from its use. WHO acknowledges the Hôpitaux Universitaires de Genève (HUG), in particular the members of the Infection Control Programme, for their active participation in developing this material.

May 2009

NOTICES

WE'RE HERE TO HELP!

THE SCHOOL COUNSELLING SERVICE IS HERE TO HELP SUPPORT YOU AND YOUR FAMILY.

CHILDREN'S REACTIONS TO TRAUMATIC EVENTS MAY RESULT IN CHANGES TO THEIR BEHAVIOUR. IF YOU HAVE ANY CONCERNS ABOUT YOUR CHILD'S REACTIONS OR BEHAVIOUR, PLEASE CONTACT THE SCHOOL.



**SOME THINGS
YOU MAY
NOTICE IN
YOUNGER
CHILDREN...**

**Difficulty
sleeping**

**More
clingy**

**School
avoidance**

Tantrums

Irritability

**Physical
problems e.g.
headaches,
stomach
aches**

**Difficulty
concentrating**

Anger